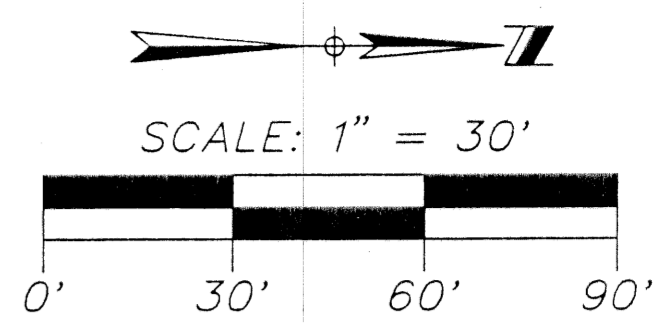


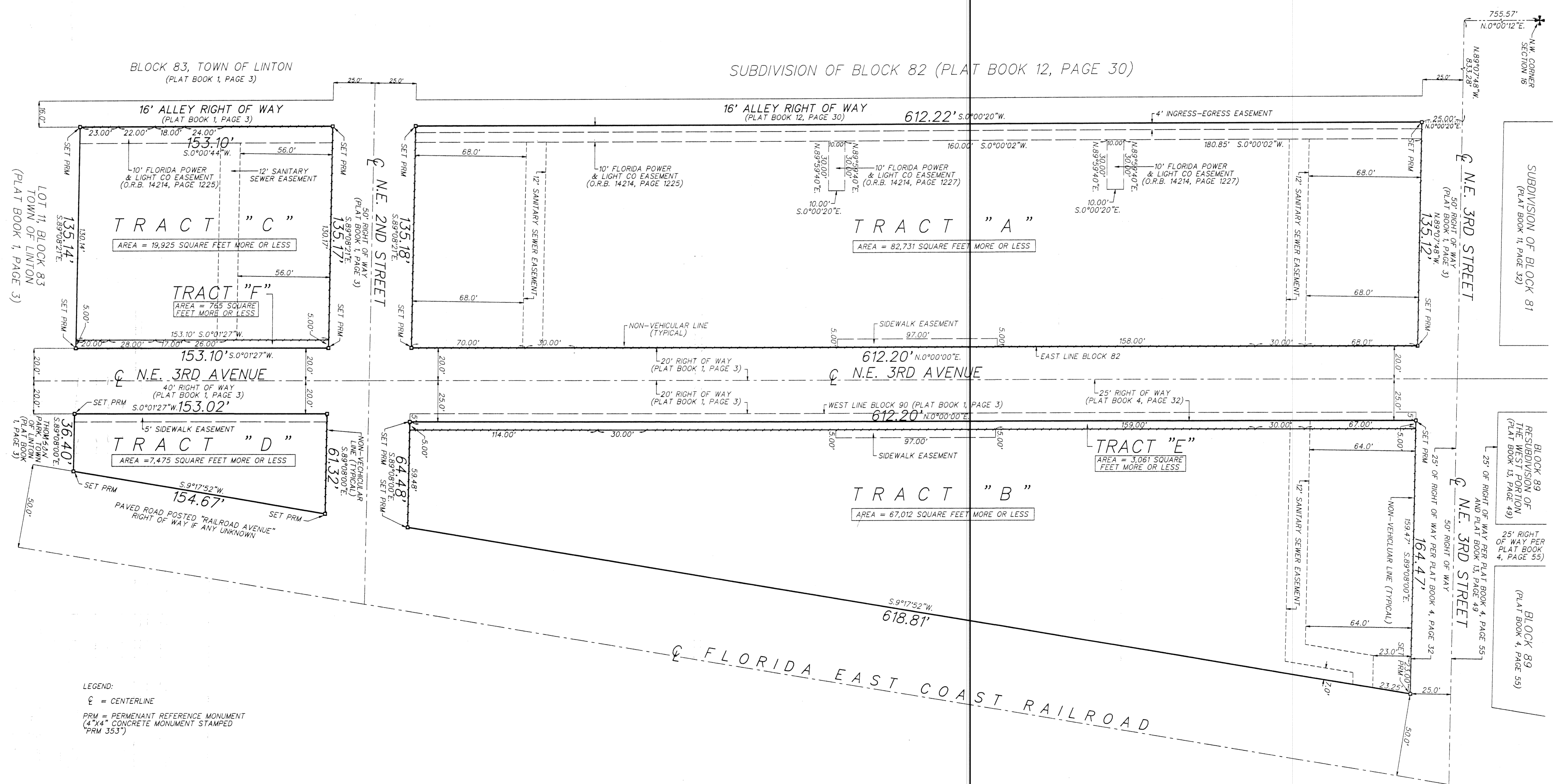
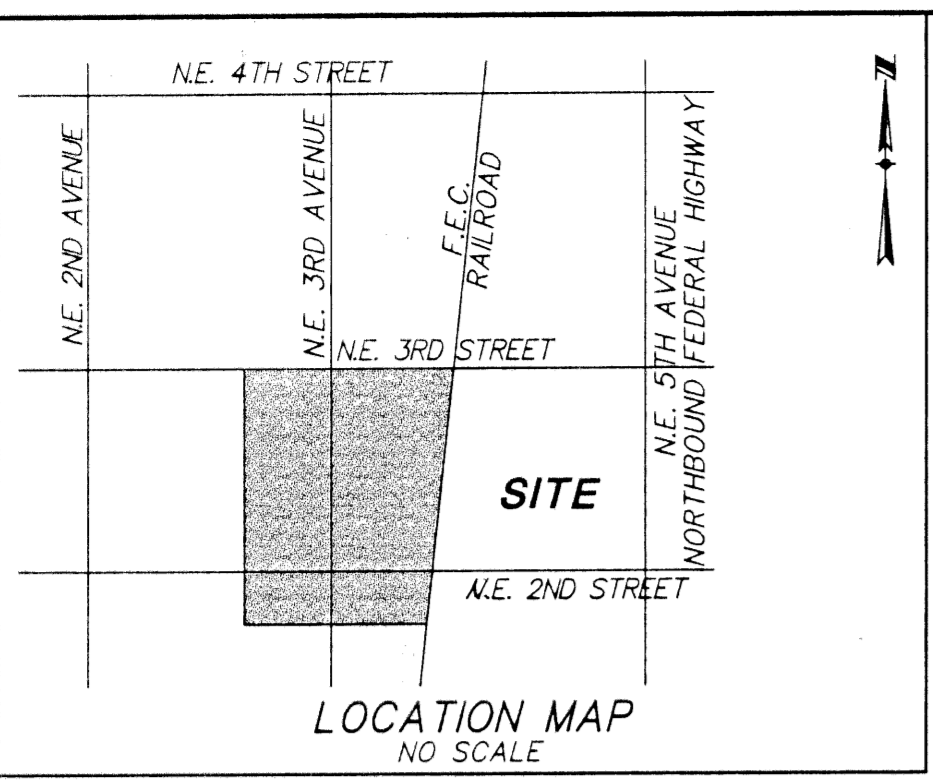
PINEAPPLE GROVE VILLAGE

BEING A REPLAT OF A PORTION OF LOTS 13 THROUGH 24, INCLUSIVE, BLOCK 82, SUBDIVISION OF BLOCK 82 (PLAT BOOK 12, PAGE 30), LOTS 9 AND 10, BLOCK 83, AND NORTH 153 FEET OF "THOMSON PARK", TOWN OF LINTON (PLAT BOOK 1, PAGE 3) AND LOTS 1 THROUGH 24, INCLUSIVE, BLOCK 90 (PLAT BOOK 4, PAGE 32), SECTION 16, TOWNSHIP 46 SOUTH, RANGE 43 EAST, CITY OF DELRAY BEACH, PALM BEACH COUNTY, FLORIDA.

AUGUST 2002
SHEET 2 OF 2



COUNTY OF PALM BEACH
STATE OF FLORIDA
THIS PLAT WAS FILED FOR RECORD AT _____
THIS _____ DAY OF _____
20____ AND DULY RECORDED IN PLAT BOOK NO. _____
ON PAGE _____
DOROTHY H. WILKEN, CLERK OF CIRCUIT COURT
BY _____ D.C.



LEGEND:
C = CENTERLINE
PRM = PERMANENT REFERENCE MONUMENT
(4"x4" CONCRETE MONUMENT STAMPED
(PRM 353))